



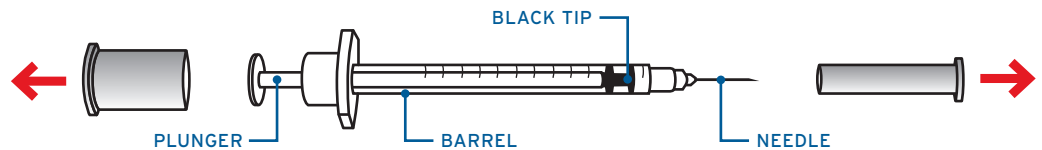
Insulin Injection for Pets

A STEP-BY-STEP GUIDE FOR PET OWNERS

PREPARING THE SYRINGE

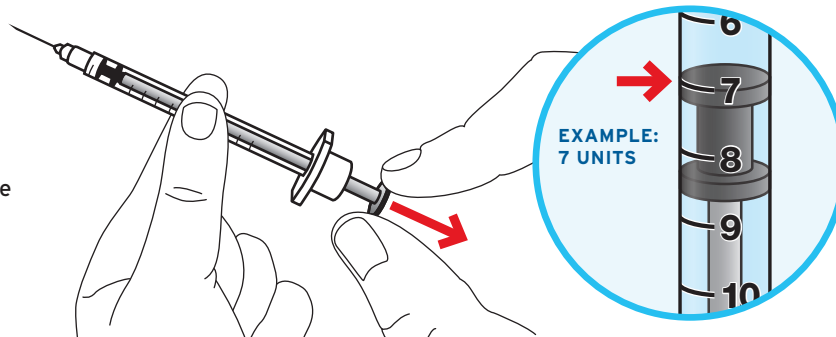
Be sure to read and follow the instructions that accompany the insulin prescribed by your veterinarian. For example, many types of insulin require gentle rolling of the vial to mix the contents before each use. Also make sure you're using the proper insulin syringe: U-40 and U-100 syringes are not interchangeable.

- 1 Remove the protective plastic caps from the syringe's plunger and needle.



- 2 Fill the syringe with air by pulling back on the plunger until the black tip is even with the line showing the dose your vet prescribed.

It's important to be precise when measuring!



Measuring the dose

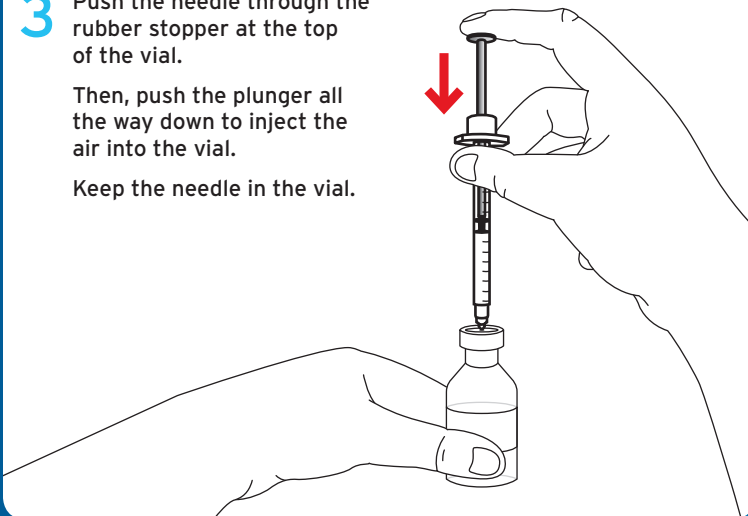
Match the black tip at the end of the plunger with the line on the barrel showing the dose your vet prescribed.

This example shows a dose of 7 units.

- 3 Push the needle through the rubber stopper at the top of the vial.

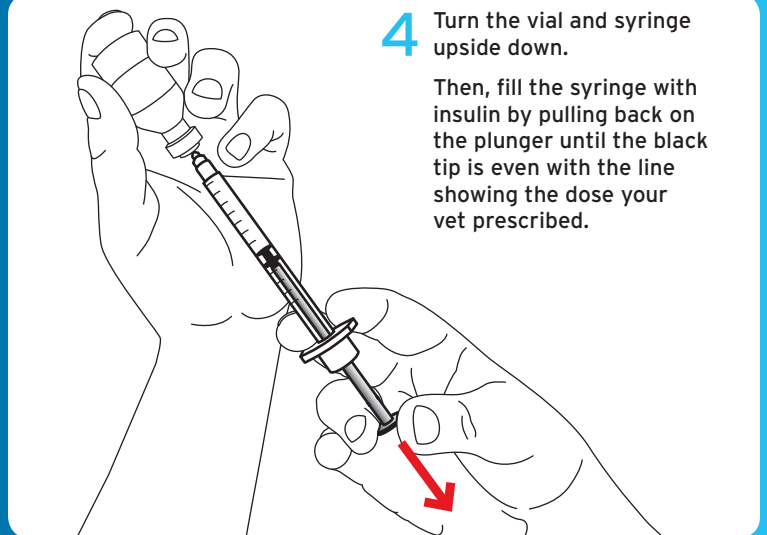
Then, push the plunger all the way down to inject the air into the vial.

Keep the needle in the vial.



- 4 Turn the vial and syringe upside down.

Then, fill the syringe with insulin by pulling back on the plunger until the black tip is even with the line showing the dose your vet prescribed.



- 5 If there are air bubbles inside the syringe: Gently tap on the side of the syringe, inject the bubbles back into the vial, and pull the plunger back to the prescribed dose.

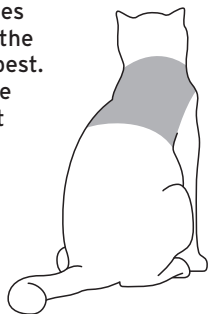
- 6 Remove the needle from the vial. Now you're ready to give the injection to your pet. You need to keep the needle sterile, so don't let it touch anything.



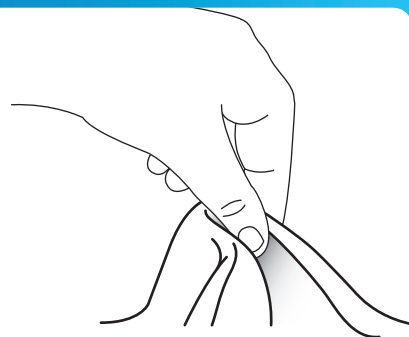
GIVING THE INJECTION

Once the syringe has been filled with the correct dose of insulin, take a moment to calm your pet. Giving the injection will go more smoothly if both you and your pet are relaxed. With some pets, it may help to give the injection while they're eating. You may need to have someone help hold your pet so you can safely give the injection.

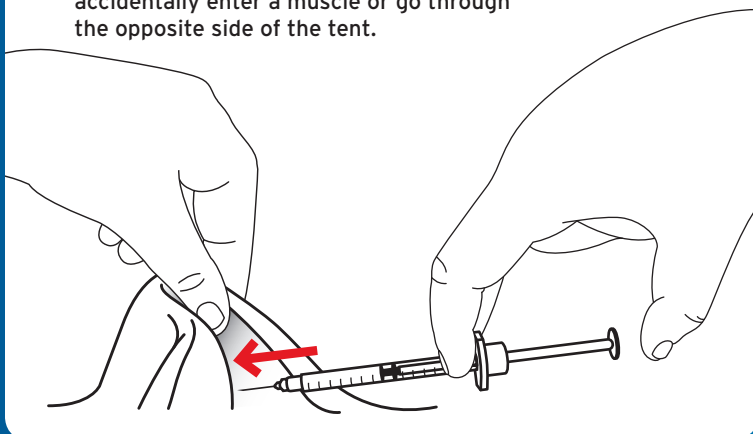
1 For dogs and cats, the most common places to inject insulin are on the neck and over the shoulder blades – loose areas of skin are best. Follow your vet's recommendations and be sure to rotate injection sites so you aren't using the same location each time.



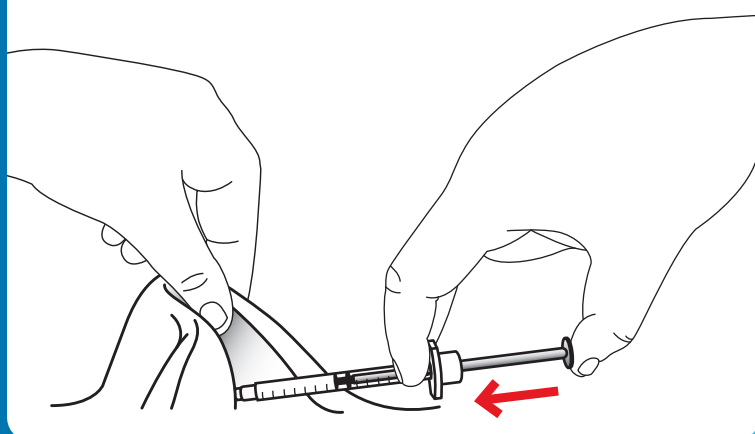
2 Gently pinch and pull up a section of your pet's skin to form a small "tent." Hold the syringe in your other hand and be sure not to let the needle touch anything.



3 Insert the needle through the skin into the base of the tent. Keep the needle approximately level with the surface of the skin so that it doesn't accidentally enter a muscle or go through the opposite side of the tent.

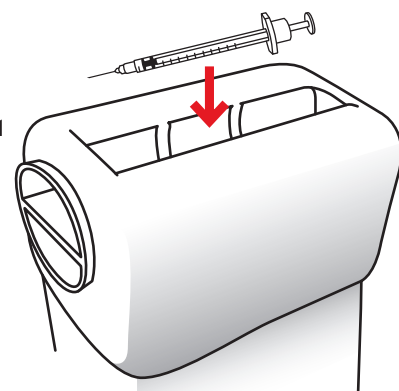


4 Place your thumb on the end of the plunger and gently push it all the way in to inject the entire dose of insulin.



5 Immediately pull the needle out of your pet's skin. If you're not sure that your pet received the entire dose, do not inject more insulin. Wait until the next scheduled injection time. It's a good idea to write down the date and time of each injection.

6 Safely store the used needle in an approved sharps container such as the UltiGuard® Safe Pack. Do not throw used needles into the trash. Always follow state and local regulations when disposing of used needles.



For more helpful hints, visit our website at www.ulticare.com

Veterinarians can request more of these teaching aids by emailing us at reorder@ulticare.com. Please be sure to include your contact name, delivery address, and telephone number.

This information has been reviewed by Dr. Jane Armstrong, DVM, MS, MBA, Diplomate of the American College of Veterinary Internal Medicine. It is provided for educational purposes only and is not intended to be a substitute for professional and/or medical advice. For specific guidance on how to give an injection to your pet, talk to your veterinarian.





Insulin Injection for Pets

HELPFUL HINTS FOR PET OWNERS

USE THE PROPER SYRINGE.

In order to give your pet the correct dose of insulin, talk to your vet to make sure you're using the proper syringe for the insulin they've prescribed. U-40 insulin must be injected with a U-40 syringe, and U-100 insulin must be injected with a U-100 syringe. **U-40 and U-100 syringes are not interchangeable.**

USE A NEW SYRINGE EVERY TIME.

To give your pet a comfortable and sterile injection, use a new insulin syringe for every injection.

Never reuse syringes.

STERILITY IS IMPORTANT.

To help ensure the insulin remains sterile, you should wash your hands before handling the vial and always avoid touching the vial's rubber stopper with your fingers.

BE PRECISE WHEN MEASURING.

It's important to be precise and fill the syringe with the exact amount of air that matches the dose of insulin prescribed by your vet. If you inject too much air into the vial, pressure will build up and insulin will leak out. If you don't inject enough air into the vial, the insulin will contain air bubbles when drawn into the syringe.

DISTRACT YOUR PET.

With some pets, it may help to give the injection while they're eating – this can distract them so that little or no restraint is needed and can make the experience less stressful.

BE QUICK AND GENTLE.

UltiCare VetRx syringes are very thin and sharp so they won't hurt your pet – especially if you insert the needle quickly but gently when giving the injection.

WRITE IT DOWN.

It's a good idea to write down the date and time of each injection. You may also want to make note of the injection site to help ensure you're not using the same location each time.

SHARE THE RESPONSIBILITY.

More than one member of your household should be familiar with the correct procedure for giving your pet an insulin injection. Make sure they also know the current dose prescribed by your vet and which injection sites to use.

For an insulin injection step-by-step guide for pet owners, visit our website at www.ulticare.com

Veterinarians can request more of these teaching aids by emailing us at reorder@ulticare.com.

Please be sure to include your contact name, delivery address, and telephone number.

This information has been reviewed by Dr. Jane Armstrong, DVM, MS, MBA, Diplomate of the American College of Veterinary Internal Medicine. It is provided for educational purposes only and is not intended to be a substitute for professional and/or medical advice. For specific guidance on how to give an injection to your pet, talk to your veterinarian.